

S2 NetBox™ XL Network Controller

APPLICATION INFORMATION
for Version 2.5 and later

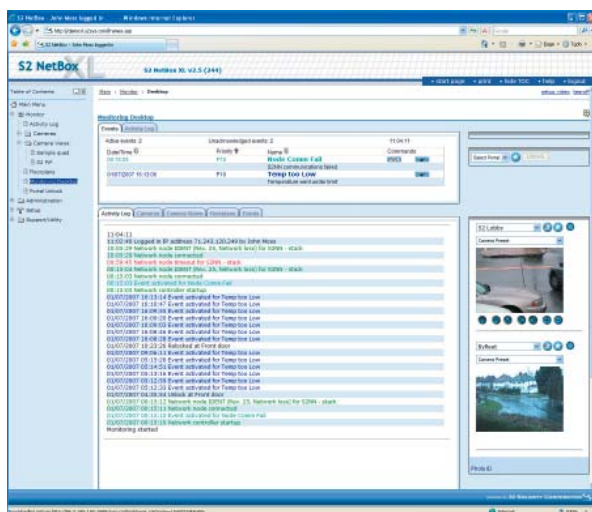
Feature Summary

- Solid state, web-based network appliance architecture
- Instant capacity expansion for any S2 NetBox system
- Manages standard S2 Network Nodes (S2NN) and blades
- Solid state design means exceptionally long life and reliability
- Integral CDRW drive or external NAS for offline media backup
- Online software update capability
- High performance x86 processor and BSD Unix OS
- Built-in web server and ODBC-accessible database server
- Supports commercial off-the-shelf memory and peripherals
- Convenient 1U form factor fits 19" equipment racks
- Expandable RAM and Flash ROM memories
- Backup to removable media, NAS, or FTP servers

Overview

The S2 NetBox XL Network Controller brings the total cost of ownership (TCO) benefits of the S2 NetBox platform to applications of greater scale and complexity. Designing and implementing larger systems is straightforward with the S2 NetBox XL: simply substitute the S2 NetBox XL for the S2 Network Controller (S2NC) and gain the ability to support more S2 Network Nodes (S2NN) and web users on a single system.

As with the S2 NetBox, the S2 NetBox XL is delivered as a solid state network appliance with web-based embedded software so there is no software to install on any client or server. As with the S2 NetBox, the XL model delivers the user interface to popular web browsers making the system accessible to all users whether local or remote, whether running a PC, Macintosh, or Sun workstation.



Access control, event monitoring, video surveillance, ID management, and other functions are delivered right to your web browser.



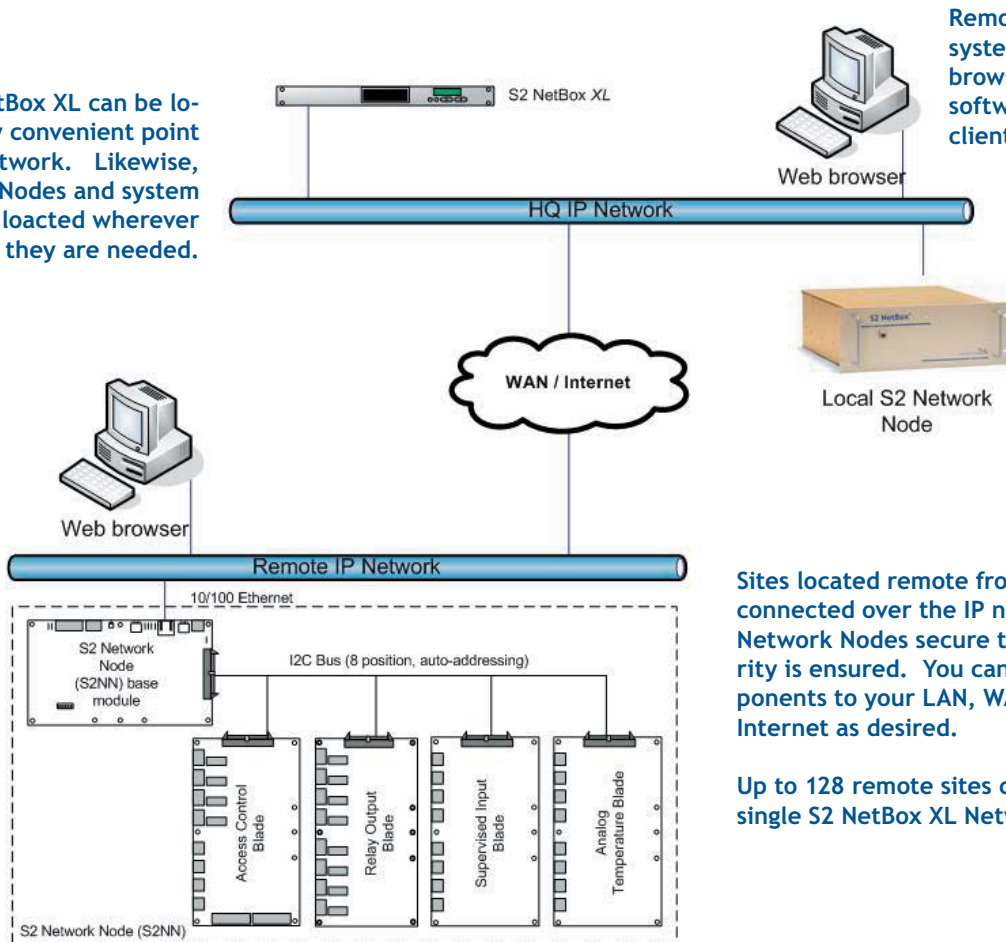
The S2 NetBox XL is provided in a 1U enclosure that fits a standard, 19" IT equipment rack.

Installation is truly plug-and-play. Simply power up the S2 NetBox XL, assign an IP address, and begin operation. The S2 NetBox XL automatically recognizes S2 Network Nodes and application blades connected to your LAN, WAN, or the public Internet. Setup could not be easier: graphical displays help you configure your system with point and click simplicity.

Beyond capacity increases, the S2 NetBox XL includes advanced capabilities that support your scaled environment. New software is easily loaded and automatically distributed throughout system components over the network. S2 NetBox XL systems can be easily augmented with compatible applications from a number of third party vendors that provide video, ID management, single signon, and other integrated solutions.

S2 NetBox XL in architecture...

The S2 NetBox XL can be located at any convenient point on your IP network. Likewise, S2 Network Nodes and system users can be located wherever they are needed.



Remote users operate the system using a common web browser; there is no need for software to be installed on client computers.

Sites located remote from the S2 NetBox XL are connected over the IP network. Because S2 Network Nodes secure themselves, data integrity is ensured. You can safely connect components to your LAN, WAN, or even the public Internet as desired.

Up to 128 remote sites can be connected to a single S2 NetBox XL Network Controller.

The S2 NetBox XL supports standard S2 Network Node units. All of the application blades are supported, letting you build your system with smaller S2 NetBox units, converting to the XL as capacity and feature needs dictate.

Parameter	Specification
Processor system	x86 series
Operating system	BSD Unix
Size	19" rack, 1U
Number of S2 Network Nodes Supported	128
Number of simultaneous users supported	25
Number of access card readers supported	1,792
Number of access card holders in database	150,000

S2 Security Corporation

World Headquarters
6 Abbott Road
Wellesley, MA 02418 USA
Tel: +1 781 237 0800
Fax: +1 781 237 4141

S2 Security EMEA

PO Box 292
West Byfleet
Surrey KT147NZ
United Kingdom
Tel: +44 (0) 1483 852181

S2 Security ASIA

808, #04-151 French Road
Kitchener Complex
Singapore 200808
Singapore
Tel: +65 65658916



www.s2sys.com